

Empowering your business, one transaction at a time.

Innovative payment solutions delivered with a personal touch.

Accept payment in-person or online with our innovative terminal solutions. Whether you need a stationary, wireless, mobile, or virtual terminal, a payment gateway, or software integration, ECS is the right choice for you.



Diverse solutions for every scenario.



Credit & Debit

With a diverse range of credit and debit card processing solutions, we have what you need.



ACH

Completely electronic, ACH transactions are efficient and low-cost.



ATM

Connect to all major ATM networks.



Banking

With a merchant bank account, you'll have access to our affordable rates and award-winning merchant services team.



High-Risk

We're built to handle complex merchants, regardless of your industry.



Lending

Lending your way to provide you with the instant capital you need.



Merchant Cash Advance

Access the assets your business deserves.



Remote Deposit Capture

With ECS, there's no need to go to the bank to cash payment checks.

To find out more [click here](#)



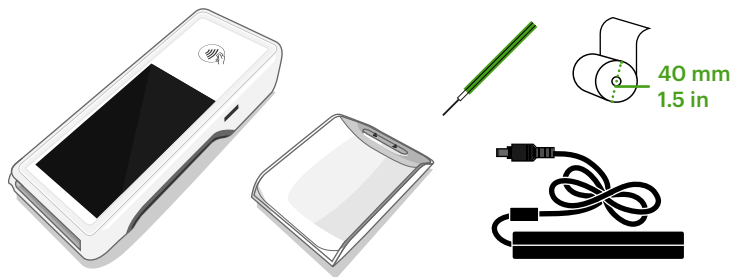


Flex

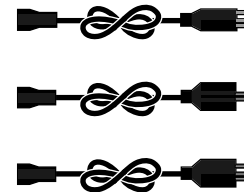
Quick Start Guide

Kurzanleitung · Instructions de démarrage · Guía de inicio rápido
Guida introduttiva · Snelstartgids

clover.com/help



Select regions
Ausgewählte Regionen
Algunas regiones
Certaines régions
Per alcune zone
Sommige regio's



Clover Network, Inc.
415 N Mathilda Ave
Sunnyvale, CA 94085, USA

Patent
clover.com/patents

Clover Flex
Model: C403 (Wi-Fi)
FCC ID: HFS-C403W
IC: 1787B-C403W
HVIN: C403W

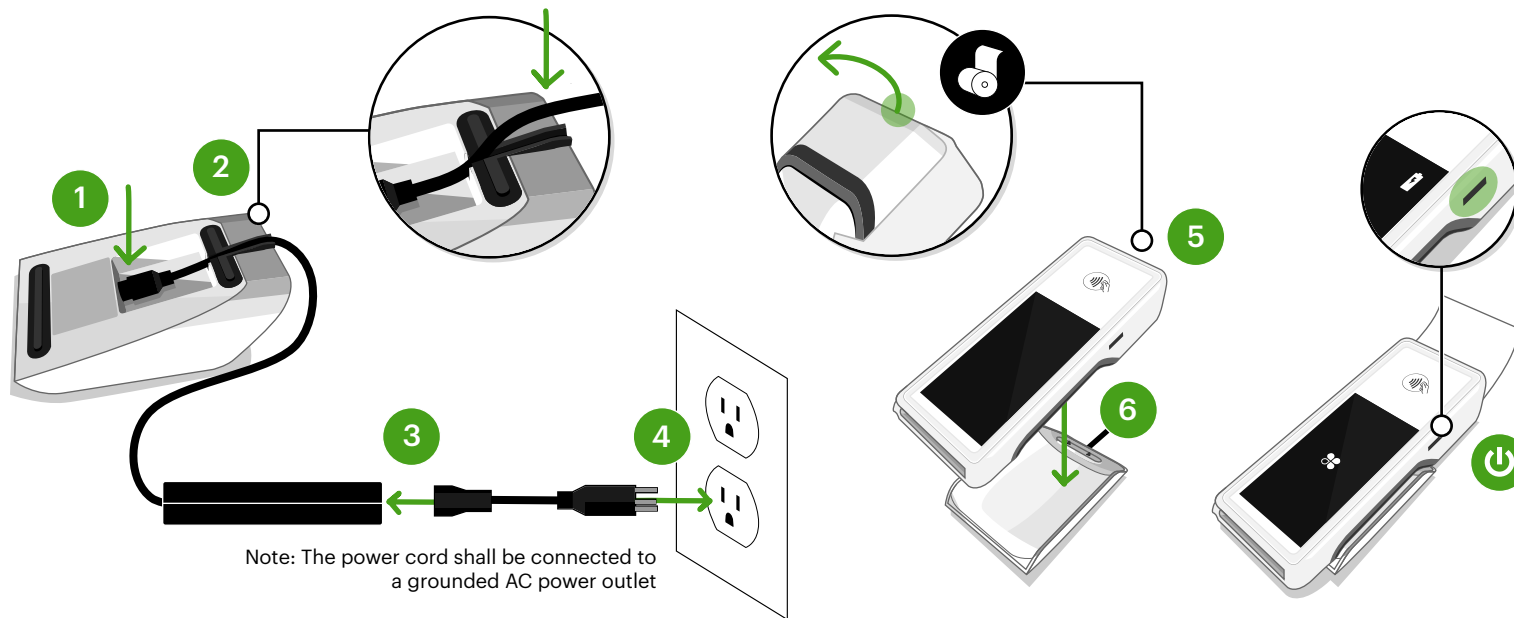
Model: C403 (AT&T)
FCC ID: HFS-C403U
IC: 1787B-C403U

Model: C403 (Verizon)
FCC ID: HFS-C403V

Model: C403 (Europe)
The FCC IDs and IC certificate are not applicable

Model: C403 (Argentina)
CNC ID: C-24204
The FCC IDs and IC certificate are not applicable

EU Importer
Marketplace Merchant Solutions Ltd
Unit 9, Richview Office Park, Clonskeagh, Dublin 14, Ireland



Note: The power cord shall be connected to a grounded AC power outlet



Waste Electrical and Electronic Equipment-WEEE
NOTE: This product is covered electronic equipment under the European Union's Waste from Electrical and Electronic Equipment ("WEEE") Directive (2012/19/EU). The WEEE Directive requires that covered equipment be collected and managed separately from typical household waste in all EU member states. Please follow the guidance of your local environmental authority or ask the shop where you purchased the product for collection or recycling options.

FCC Part 15

This device complies with Part 15 of the FCC Rules. Operation is subject to the following two conditions: (1) This device may not cause harmful interference, (2) This device must accept any interference received, including interference that may cause undesired operation.

FCC Part 15 Class B-specific

Note: This equipment has been tested and found to comply with the limits for a Class B digital device, pursuant to part 15 of the FCC Rules. These limits are designed to provide reasonable protection against harmful interference in a residential installation. This equipment generates, uses and can radiate radio frequency energy and, if not installed and used in accordance with the instructions, may cause harmful interference to radio communications. However, there is no guarantee that interference will not occur in a particular installation. If this equipment does cause harmful interference to radio or television reception, which can be determined by turning the equipment off and on, the user is encouraged to try to correct the interference by one or more of the following measures:

- Reorient or relocate the receiving antenna.
- Increase the separation between the equipment and receiver.
- Connect the equipment into an outlet on a circuit different from that to which the receiver is connected.
- Consult the dealer or an experienced radio/TV technician for help.

FCC Warning

Changes or modifications not expressly approved by the party responsible for compliance could void the user's authority to operate the equipment. This transmitter must not be co-located or operating in conjunction with any other antenna or transmitter.

Radiation Exposure Statement

The product comply with the FCC portable RF exposure limit set forth for an uncontrolled environment and are safe for intended operation as described in this manual. The further RF exposure reduction can be achieved if the product can be kept as far as possible from the user body or set the device to lower output power if such function is available.

Innovation, Science and Economic Development Canada (ISED) statement:

CAN ICES-3 (B)/NMB-3(B)

This device complies with ISED's licence-exempt RSSs. Operation is subject to the following two conditions: (1) This device may not cause harmful interference, and (2) this device must accept any interference received, including interference that may cause undesired operation. Le présent appareil est conforme aux CNR d'ISED applicables aux appareils radio exempts de licence. L'exploitation est autorisée aux deux conditions suivantes : (1) le dispositif ne doit pas produire de brouillage préjudiciable, et (2) ce dispositif doit accepter tout brouillage reçu, y compris un brouillage susceptible de provoquer un fonctionnement indésirable.

Caution:

- (i) the device for operation in the band 5150-5250 MHz is only for indoor use to reduce the potential for harmful interference to co-channel mobile satellite systems;
- (ii) the worst-case tilt angle(s) necessary to remain compliant with the e.i.r.p. elevation mask requirement set forth in Section 6.2.2(3) shall be clearly indicated.
- (iii) Users should also be advised that high-power radars are allocated as primary users (i.e. priority users) of the bands 5250-5350 MHz and 5650-5850 MHz and that these radars could cause interference and/or damage to LE-LAN devices.

Avertissement:

Le guide d'utilisation des dispositifs pour réseaux locaux doit inclure des instructions précises sur les restrictions susmentionnées, notamment : (i) les dispositifs fonctionnant dans la bande 5150-5250 MHz sont réservés uniquement pour une utilisation à l'intérieur afin de réduire les risques de brouillage préjudiciable aux systèmes de satellites mobiles utilisant les mêmes canaux; (ii) les pires angles d'inclinaison nécessaires pour rester conforme à l'exigence de la p.i.r.e. applicable au masque d'élévation, et énoncée à la section 6.2.2 3), doivent être clairement indiqués. (iii) De plus, les utilisateurs devraient aussi être avisés que les utilisateurs de radars de haute puissance sont désignés utilisateurs principaux (c.-à-d., qu'ils ont la priorité) pour les bandes 5250-5350 MHz et 5650-5850 MHz et que ces radars pourraient causer du brouillage et/ou des dommages aux dispositifs LAN-EL.

Radiation Exposure Statement:

The product complies with the Canada portable RF exposure limit set forth for an uncontrolled environment and are safe for intended operation as described in this manual. The further RF exposure reduction can be achieved if the product can be kept as far as possible from the user body or set the device to lower output power if such function is available.

Déclaration d'exposition aux radiations:

Le produit est conforme aux limites d'exposition pour les appareils portables RF pour les Etats-Unis et le Canada établies pour un environnement non contrôlé. Le produit est sûr pour un fonctionnement tel que décrit dans ce manuel. La réduction aux expositions RF peut être augmentée si l'appareil peut être conservé aussi loin que possible du corps de l'utilisateur ou que le dispositif est réglé sur la puissance de sortie la plus faible si une telle fonction est disponible.

Argentina:



Este producto utiliza para su funcionamiento una fuente de alimentación, modelo FSP040-RHBN3 marca Clover con las siguientes características técnicas: Entrada: AC 100-240 V, 50-60 Hz, 1.5 A, Cl. I; Salida: DC 12 V, 3.33 A, que ha sido certificada para su utilización en el mercado argentino.



Conectar una fuente diferente a la provista podría ocasionar un incendio o choque eléctrico. No utilice una fuente diferente a la provista con el equipo.

EU Declaration of Conformity

Hereby, Clover Network, Inc. declares that the radio equipment type, C403 is in compliance with Directive 2014/53/EU. The full text of the EU declaration of conformity is available at the following internet address: eu.clover.com/eu-compliance

The frequency band and the maximum transmitted power in EU are listed below:

WWAN

LTE Band3: 22.5 dBm (Conducted)
LTE Band7: 23 dBm (Conducted)
LTE Band20: 22 dBm (Conducted)

NFC

-3.84 dBuA/m @ 10m

CE max SAR 10g

Body 1.44 W/Kg
Limb 2.28 W/Kg

WLAN

2400MHz-2483.5MHz: 17.5 dBm (EIRP)
5150MHz-5250MHz: 19.5 dBm (EIRP)
5250MHz-5350MHz: 19.5 dBm (EIRP)
5470MHz-5725MHz: 22 dBm (EIRP)

Restrictions in

AT/BE/BG/CZ/DK/EE/FR/DE/IS/IE/IT/EL/ES/CY/LV/LI/LT/LU/HU/MT/NL/NO/PL/PT/RO/SI/SK/TR/FI/SE/CH/UK/HR. 5150MHz-5250MHz is for indoor use only.

Caution: Exposure to Radio Frequency Radiation

This product complies with EU requirements regarding restriction of exposure of persons to radio-frequency energy (RF) emitted by telecommunication and radio devices as it is designed and manufactured in such a way as not to exceed the exposure limits indicated by the European Union Commission. The permitted SAR limit for the general population is 2.0 W/Kg for body and 4.0 W/Kg for limb. This limit guarantees an ample safety margin that protects all persons regardless of age and health condition. SAR is measured with the device at 5mm to the body and at 0mm to the extremity, while transmitting at the highest certified output power level in all frequency bands of the device. The highest SAR level recorded for this model was equal to body 1.44W/Kg, & limb 2.28 W/Kg.